



Organisational Impact

A Snapshot

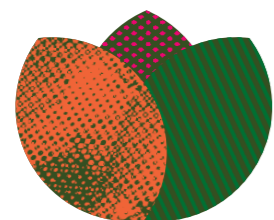
Through partnerships with people experiencing inequality, other community organisations, researchers, policy makers and government, we at Micah Projects seek to learn how data can guide our collaborations, services and build new ways of working that transform systems into integrated catalysts of equity, redress and justice.



27,694 people
were supported across all services

1,459 children and young people

924 children under 5 years



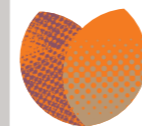
242,800 hours
of support across all services



105,226 engagements
through planned support



1,902 instances
of assertive outreach
to people on the
street provided by
Sreet to Home



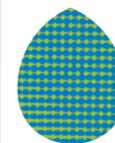
1,888 active patients
were registered at
the Inclusive Health
and Wellness Hub



7,934 people
participated
in events,
groups and
community
education



11,578 meals
cooked and distributed
through outreach teams
and Hope Street Cafés



34,874 nights
of accommodation
provided to individuals
and families



785 tenancies
were sustained
with support



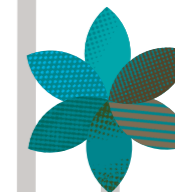
2,250 people
engaged with
Lotus Place



11,936 women
supported by Domestic
and Family Violence Services



112,000+
phone calls
received for service
and/or assistance



5,503 people
presented to the
Home for Good Hub



238 housing setups
provided with
furniture and
essentials

