



BREAKING
SOCIAL ISOLATION

BUILDING
COMMUNITY

Vision Statement

Our hope is to create justice and respond to injustice at the personal, social and structural levels in church, government, business and society.

Mission Statement

To respond to people who experience exclusion, poverty, injustice and social isolation so that they may experience inclusion, economic wellbeing, justice and connection within their community of choice.

Guiding Principles

Micah Projects endorses the United Nations Declaration of Human Rights. In responding to individuals, families, groups, communities and institutions we believe that people require:

- access to a broad range of personal, social, intellectual, economic and spiritual resources for personal and community wellbeing
- forums to participate in decisions which impact on their lives at an individual, social and structural level
- commitment to equity, acknowledging the impact of age, gender, economic status, disability, sexual orientation, culture and religious belief
- a commitment to human rights, personal dignity of individuals and ensuring just processes for conflict resolution
- opportunities to redress neglect and abuse of past and/or present experiences
- resources to enable restoration of relationships with self, family, community, social and religious institutions.

We acknowledge the Aboriginal and Torres Strait Islander peoples of Australia as the traditional owners of this land and support the right of Indigenous people to self determination and cultural expression.

Core Business

The agreed core business or reason for being of Micah Projects is:

An unswerving commitment, focus and determination to advocate and deliver on our social justice mandate.

The service areas that will be governed by the Board and continuously developed and delivered by the Coordinator, team leaders and workers are:

- Family, Women and Children Support Services
- Forgotten Australians Support Services
- Homelessness to Home Support Services
- Mental Health and Disability Support Services
- Supportive Housing Services
- Innovation, Research and Evaluation Unit.

CONTENTS

micah projects board members 2009/2010	02
chairperson's comments	03
coordinator's report	04
treasurer's comments	06
2009/2010 highlights	07
micah projects services	12
micah projects staff	14
auspice projects	16
research innovation & evaluation	18
partners	19
donors & supporters	20
just one person...	21
financial reports	22
statement of revenue & expenses	23
balance sheet	25
50 lives 50 homes snapshot	26
support micah projects	28
contact us	29

MICAH PROJECTS BOARD MEMBERS 2009/2010

Chairperson:

Michael Kelly
*Natural Resource Officer
Department of Environment and Resource Management*

Vice Chairperson:

Margaret Rodgers
Communication Consultant, Rowland

Treasurer:

Michael Booth
University Tutor, Queensland University of Technology

Secretary:

Terry Fitzpatrick
Catholic Priest, St Mary's Community, South Brisbane



Michael Kelly speaking at the
Homeless to Home Healthcare
Forum 11.06.2010

Board Members:

David Cantwell
Fund Manager, Anglican Financial Services

David Gonsalves
Lawyer, MPN Lawyers

Annie Holden
Social Policy Consultant, ImpaxSIA Consulting Services

Peter Martin
Mission Support Services, Mater Health Services

Karyn Walsh
Coordinator, Micah Projects

CHAIRPERSON'S COMMENTS

Micah Projects continues to grow as a highly reputable social justice organisation and improve on the services offered to the people we support. We respond to people who experience exclusion, poverty, injustice and social isolation at personal, social and structural levels of society by connecting with them, addressing their needs, providing social outreach and advocating on their behalf.

This mission comes with many challenges. One vital challenge, recognised by the Board, is the availability of funding to undertake this purpose. As a not for profit organisation largely reliant on financial assistance from the state government, the organisation must remain strongly focused and dedicated to ensure funding is efficiently allocated to achieve its main objectives.

This year the Governance and Finance Sub-Committees were established to improve the efficiency and productivity of bi-monthly Board meetings. These sub-committees are comprised of Board members and Micah Projects staff and meet outside Board meetings to deal with issues such as the development of the Board Charter, Terms of Reference, and analysis of audit reports. The respective Chair reports back to the Board at meetings of the full Board.

Micah Projects is strongly committed to the professional development of its staff. Staff routinely attend training to assist them to perform their roles and ensure currency with changes in practice and the broader community sector. The Board also supports and encourages the ongoing development of its members by attending presentations, training sessions and conferences. These development opportunities ensure Board members network with and learn from Board members from other not for profit organisations within and outside the community sector.

In January the Board participated in a review of our Strategic Plan, facilitated by consultant Patrick Herd. This was a great opportunity to have the input of Board members and staff into the plan to guarantee its ongoing relevance and pertinence to the organisation.

A social highlight of my year is always the Moonlight Magic Dinner Dance and the September 2009 event was no exception. Congratulations to all who made this a truly magical night for all who attended!

In June 2010, I was privileged to participate as a volunteer in the 50 Lives 50 Homes campaign to house and support Brisbane's 50 most vulnerable homeless people. This campaign, initiated and led by Micah Projects, demonstrates the organisation's unswerving commitment to reduce chronic homelessness, a commitment no doubt shared by the volunteers who braved the 4am starts!

The Micah Projects Board is honoured to be part of an enthusiastic, progressive and dynamic not for profit social justice organisation.

Michael Kelly
Chairperson

COORDINATOR'S REPORT



The past twelve months have been filled with change, innovation and excitement for Micah Projects. With the changes that arose through moving from St Mary's House, we explored new opportunities for how we continue to develop our identity within the community as an organisation.

We have had great leadership from our communications manager Robyn McDonald in creating more professional publications and consolidating our visual identity. This work has communicated the changes in the organisation's location and more accurately reflects our current activities.

Any concerns that we had about how the move from St Mary's House would impact on our relationships with our supporters, donors and people accessing our services were thankfully not realised. We can reflect on the last year in our new location with great satisfaction as there has been no adverse impact on any of our activities.

Boundary Street, West End feels like our home as an organisation. The weekly rhythm of the St Mary's Community members' presence in the office continues the relationships we had at St Mary's House. The office space is a great source of activity with many visitors coming to meetings or booking meeting rooms, and providing a real home base for Board members, volunteers and staff from all service delivery locations.

We feel part of the hustle and bustle of Boundary Street, with no shortage of opportunities to see residents from nearby hostels and boarding houses, people with whom we engage while homeless as well as many friends, supporters and colleagues from other community organisations, local businesses and government agencies.

Years of research and advocacy came to fruition this year with a series of milestones resulting in the vision for Common Ground supportive housing now becoming a reality in Brisbane. What stands out for me in this process is the foresight and commitment of the Micah Projects Board over several years to invest in our staff by enabling us to attend conferences, training opportunities and site visits in the USA. This investment has achieved great outcomes through our international partners informing and assisting us with our understanding of supportive housing and accessing training through the National Conference on Ending Homelessness in Washington DC. Nan Roman (National Alliance to End Homelessness), Rosanne Haggerty (Common Ground), Dr Jim O'Connell (Boston Health Care for the Homeless), Suzanne Wagner and Andrea White (Housing Innovations) and Liz Harper and Paul Thomas (St Mungo's) have been particularly helpful in linking us to leaders in cities that are similar to Brisbane and initiatives that reflect our local context.

I feel that through these opportunities we have a great knowledge base and depth of understanding about supportive housing; the resources to use in advocacy; and the partnerships with international, national and local agencies who share a vision and a commitment to continually learn new approaches to complex social and economic realities that impact on the lives of the most disadvantaged in the community. I am confident that Micah Projects can implement supportive housing and Street to Home initiatives that will confirm the investment by government and have real results for individuals who benefit from our services.



Top: Karyn Walsh, Coordinator.

Bottom: Our invitation to Mr Abbott on the Boundary St sandwich board, 24.02.2010.



Signage (designed by Inkahoots) welcomes visitors to the Boundary Street home base.

Over the year team leaders have continued to participate in our Sustaining Leadership Program through the facilitation and support of Howard Nielsen. The program aims to support team leaders in their professional development and our commitment to shared leadership within the organisation.

Patrick Herd and Michael Goldsworthy continue to lead us in developing our governance and operational systems, especially our strategic and operational plans.

Our first Moonlight Magic Dinner Dance at the Brisbane Convention and Exhibition Centre was a great success and the feedback, as always, gives all the evidence we need to create this annual opportunity for social inclusion. This night symbolises for me what is at the heart of Micah Projects: a passionate team of workers who want to make a difference and the critical importance of the small things in life that enable us to participate in community life.

This year I was partly sponsored by Suncorp and Micah Projects to participate in the Benevolent Society Social Leadership Australia program. While the commitment of time was a challenge, I am appreciative of the opportunity for reflection, learning and new relationships with others in the government, business and community sectors.

The number of people with whom Micah Projects comes into contact increases every year. Over the year we have provided support and advocacy services to 901 families (including 1,323 children) and 1,754 individuals and have had 32,635 contacts (including after hours) with people in need of a short term response (see page 12).

I would like to acknowledge each of the team leaders and thank them for their leadership; all support and advocacy workers for their dedication to the people we support and advocate alongside; and all staff in our Business Services. Each contributes to the culture and outcomes of the organisation and the pride in our achievements. I particularly thank Sherryn West and Verity Winter who provide so much personal support to me as Coordinator and to the Board.

Finally, I thank our Board, our members and all of our donors and supporters from St Mary's Community South Brisbane. Your support and understanding over the last year in the midst of so much change has been greatly appreciated.

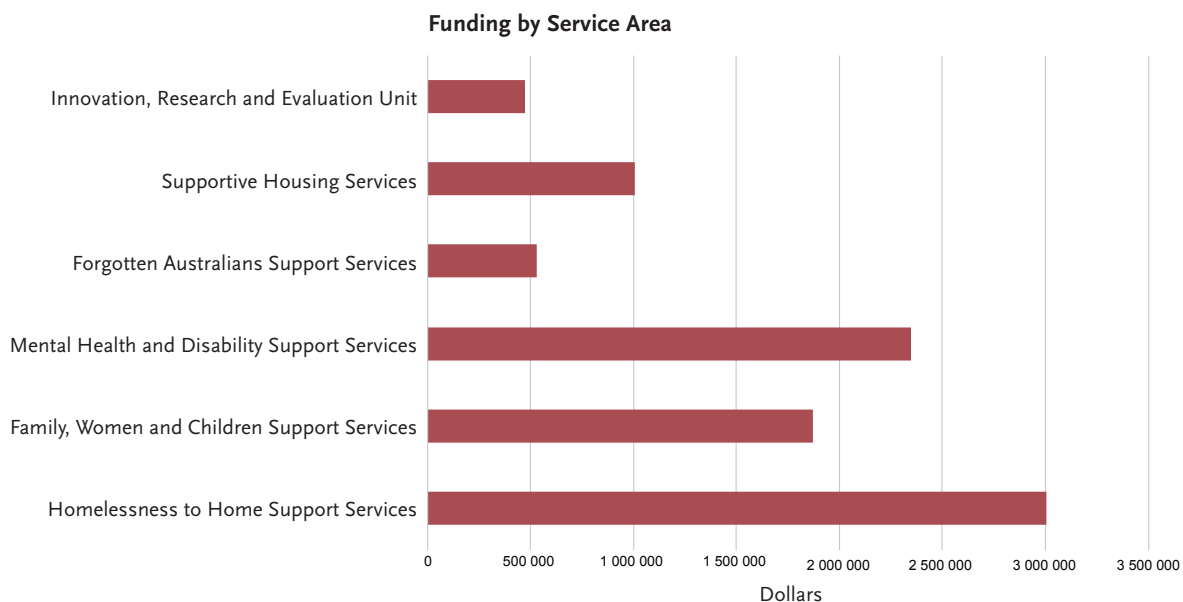
Karyn Walsh
Coordinator

TREASURER'S COMMENTS

The 2009/2010 financial year saw a significant increase in our funding from March 2010 with the successful tenders for Supportive Housing (Brisbane Common Ground) and Street to Home – a recognition and return on our investment in current work and research over the last five years.

This growth has projected our grant income from the state government to \$9,243,055 an increase from last year of \$2,378,793.

The key areas of support also saw expansion with the addition of Supportive Housing Services to the existing Homelessness to Home Support Services, Mental Health and Disability Support Services, Family, Women and Children Support Services and Forgotten Australians Support Services. The graph below displays the income according to the areas of support.



During this financial year the Board made a decision to implement the new wage rates for staff following the successful pay equity case in Queensland. This was a decision that has seen the absorption of some of the accumulated earnings from the previous financial years. The result for this financial year was a budget deficit of \$44,266. The reserves position at 30th June 2010 is now \$130,000 a reduction from last year of \$170,000. The Board continues to be confident Micah Projects is in a sound financial position.

The finance unit within the Business Services team led by Sherryn West continues to provide excellent financial services. Paul Bellas and Peter Allen from Bellas Accountants continue to be our external accounts consultants and Arrow Accountants are our Auditors.

Micah Projects is fortunate to have the services of highly skilled and dedicated members of staff. The reports and analysis of financial issues have been of the highest calibre. I have confidence in the strong focus on financial accountability of Micah Projects.

Michael Booth
Treasurer

2009/2010 HIGHLIGHTS



Prime Minister Kevin Rudd with Forgotten Australians and British Child Migrants in Parliament House 16.11.2009.

Apology to Forgotten Australians & British Child Migrants

Clearly the highlight for Forgotten Australians and British Child Migrants in the past year was the National Apology on 16 November 2009, delivered by the then Prime Minister Kevin Rudd with bi-partisan support by the then Opposition Leader Malcolm Turnbull. For the members of the Historical Abuse Network in Queensland it was particularly significant as they had advocated along with others from across Australia for such an apology to be made.

The British Prime Minister Gordon Brown, supported by leaders of all parties in the UK parliament, followed with an apology on 23 February 2010 to all British Child Migrants who were sent to Australia, often without parental knowledge or consent and placed in church run institutions.

After years of dialogue through the Redress process, the Queensland government delivered an apology on 24 March 2010 to children in care who were placed in adult mental health institutions. In doing so, the government acknowledged its wrong doing and publicly placed on record an apology.

The Apology has provided many Forgotten Australians and Child Migrants with a long awaited acknowledgment of the physical, psychological, emotional, spiritual and sexual abuse that many experienced for sustained periods over their childhoods. These experiences have left many with the longstanding impacts of trauma on their adult life, as well as the courage and determination to make public the secrets of their past and their struggle for appropriate justice and accountability: a journey which for many, is still unfinished.

The year also saw the finalisation of the Redress Scheme in Queensland for which over 10,000 Queenslanders applied. While each individual has had to determine for themselves what the offer of Redress has meant for them and their own journey, it is without doubt that for many it was received not as compensation for what they suffered but as a financial payment recognising that they did experience abuse and neglect while in the care of the church or state as children.

Micah Projects has for the past 13 years been involved with Forgotten Australians and British Child Migrants on a journey that has taken us all beyond what we started believing was possible.

Participate in Prosperity

Participate in Prosperity (PiP) represents Micah Projects' vision to integrate social and economic responses in working with disadvantaged families. Funded by the Queensland Department of Employment, Economic Development and Innovation, PiP assists long term unemployed adults in families to address barriers to employment. Parents are supported to access education, employment and training opportunities in order to build their skills, confidence and experience to enter the workforce. Micah Projects PiP program focuses on working with parents who are homeless or at risk of homelessness and young parents under the age of twenty five.

The team is comprised of a team leader, two support and advocacy workers and a peer support worker. PiP has been implemented as part of the Innovation, Research and Evaluation approach to service delivery and works across all Family, Women and Children Support Services. The team has successfully supported 40

individuals to participate in training; 8 individuals returned to full time employment and 6 individuals returned to casual or part time work, often while studying. 20 people were supported to complete the Construction Safety Card course in order to obtain work on building sites.



Micah Projects at the Brisbane Common Ground site with Ministers Karen Struthers & Tanya Plibersek (photography courtesy Department of Communities).

Brisbane Common Ground Initiative

In April 2010, the Queensland and Australian governments announced the site for the development of the Brisbane Common Ground Initiative at Hope Street, South Brisbane. Federal and State Housing Ministers Tanya Plibersek and Karen Struthers made the announcement, which included the official endorsement of Micah Projects as the provider of the onsite support services (with an interim outreach support service while the building is under construction). When completed, the 146 unit development will be a sustainable housing solution for chronically homeless people and people on low incomes in Brisbane. It will complement existing housing and services within the community that address homelessness.

This announcement is the culmination of years of research and advocacy by Micah Projects, our Board and staff and our supporters from St Mary's Community.

We have now moved from advocacy to implementation of the project. The final touches are being made to the designs and the formal beginning of construction is imminent. Micah Projects' new Brisbane Common Ground team is supporting people who have been recently housed in the community as part of hot spot responses and the 50 Lives 50 Homes campaign. The Brisbane Common Ground Initiative is due for completion in June 2012.

Partnerships & Activities at the BHSC

The Brisbane Homelessness Service Centre has seen considerable growth in the number and variety of visiting services in the past twelve months. It has become a real hub of services where individuals and families who are homeless, or at risk of homelessness, can come to one place to meet a range of their needs including primary and mental healthcare, income advice, legal advice and housing support. These services complement and enhance the existing collocated services (Micah Projects, Centacare, Mater Health Services, Reclink and The Big Issue). The visiting services now include:

- General Practitioners
- Podiatrist
- Homeopath
- Acupuncturist
- Bowen Therapist
- Homeless Health Outreach Team (HHOT)
- Open Minds Homeless Workers
- Medicare
- Queensland and Commonwealth Ombudsmen
- Homeless Persons' Legal Clinic (QPILCH)
- Centrelink
- Welfare Rights Centre
- Queensland Department of Communities (Housing and Homelessness Services)

The Art Group has become a firm fixture in the activities at the BHSC, meeting twice weekly. The group is flourishing with the artists exhibiting at Art for the Margins (held during the Brisbane Festival) and West End Live. On both occasions several paintings were sold.

Early in the year we made contact with Access Arts and they kindly appointed an artist to mentor and provide professional development to the group for 2 hours a week. It has proved a great success and the artist has been advising them on how to build their own portfolios and where to exhibit their work.



Westy from Micah Projects
Street to Home team
chatting with a local in
West End.

50 Lives 50 Homes

The 50 Lives 50 Homes campaign to house and support Brisbane's first fifty most vulnerable people was launched in June 2010. Micah Projects is committed to meeting the targets set by government to reduce overall homelessness by half and offer housing to all people who sleep rough by 2020. Our colleagues at Common Ground in the USA have developed a targeted outreach strategy for the first stage of this work: creating a register of all people who are sleeping rough and prioritising those whose health is most at risk by remaining homeless. Starting with the people who are most entrenched in homelessness made sense and we decided to set achievable targets of housing fifty people at a time, or 'bite size chunks', as Becky Kanis from Common Ground Los Angeles would say!

Common Ground developed a tool called the Vulnerability Index, based on research by Dr Jim O'Connell from the Boston Health Care for the Homeless program into the key mortality risk indicators that are prevalent in people who are long term homeless. As well as collecting the name and age of homeless individuals and their health status, the Index captures data on their institutional



Top: Helen Styles with Conor Cusack and 50 toasters donated by Conor's school, Yeronga State High.
Above: UQ students from Project Sunrise donate 50 kettles to 50 Lives 50 Homes.



history (prison, hospital, military, etc.), length of homelessness, crisis accommodation use and previous housing situation. During the week of 7 June, Micah Projects support and advocacy workers were joined by outreach workers from other agencies and scores of community volunteers to administer the surveys. We went out at 4am in a methodical canvassing of places where people sleep rough in order to meet people before they left the space for the day. Respondents who consented were photographed where they slept for future identification which aids in guaranteeing consistency among teams of outreach workers. Once the data was collected, it was entered into a database and people were then ranked according to their age and prevalence of health indicators. This informs the decision making process when matching available resources in housing and support services to an individual's need.

The results of the survey were astounding and demonstrated the high degree of disability and the incredible length of time spent homeless by the people we met: one man had been homeless for 40 years. Half of the people surveyed were found to be 'vulnerable', meaning they had been homeless for over 6 months and had at least one of eight major health risk indicators, such as end stage renal disease and multiple recent hospitalisations (for a summary of results, visit micahprojects.org.au). These results provided the information necessary for planning the housing and support needs of each individual.

The Registry Week culminated in the Homeless to Home Healthcare Forum where healthcare professionals from all over Australia shared their work with vulnerable homeless people. The Forum launched a Network of healthcare professionals and organisations with the intention of advancing strategies aimed at meeting the healthcare needs of vulnerable homeless and formerly homeless adults across Brisbane. We were joined at the Forum (and throughout the week) by Dr Jim O'Connell, Becky Kanis and Beth Sandor from Common Ground LA. Their time, energy and expertise were invaluable to this process and they continue to stay in touch with the campaign.

50 Lives 50 Homes would not have been possible without our partnership with Mater Health Services and the generosity of the Mater Foundation as well as almost 100 volunteers and the parents, students and teachers of All Hallows' School (who provided a home base and breakfast for volunteers). The next twelve months promises to be busy as we work our way through the register, housing and supporting people and coordinating services that will assist people to maintain their tenancies. We look forward to the challenges this will bring as we journey with people out of homelessness.

6th Annual Moonlight Magic Dinner Dance

Every year the Moonlight Magic Dinner Dance is a major highlight on the Micah Projects calendar and every year it gets bigger and better! Growing demand for the event saw a move to a larger venue at the Brisbane Convention and Exhibition Centre. Still, it did not seem the dance floor was big enough for the over 500 members of the Brisbane community who kept it crowded all night!

Half of the guests who attend are people supported by Micah Projects who experience economic disadvantage and social isolation on a daily basis, many with a disability and living in privately owned supported accommodation (hostels). The event therefore depends on the cooperation and support of the hostel owners and managers who are always generous with their time and efforts.

To hold such a magical event and to support these people to attend requires considerable resources and organisation. It has become an event based on partnerships with organisations and individuals, including sponsors, volunteers,



Robbie and Kay at the Moonlight Magic Dinner Dance, September, 2009.

hostel staff and Micah Projects support workers. The 6th Annual Moonlight Magic Dinner Dance would not have been possible without the support of our major sponsors RBS Morgans, Disability Services Queensland, Rowland and many other generous donors.

Local dentists support people on low incomes

Many people on low incomes have difficulty in accessing dental care due to long waiting lists and high costs. For people with chronic and ongoing illness this can often contribute further to poor health, impacting on their quality of life. A Federal Government initiative, the Medicare Dental Scheme for people with chronic medical conditions and complex care needs, aims to encourage dentists in private practice to provide services to people on low incomes with chronic illness.

The team from Everything for Teeth and Peter Agosta from the West End Denture Clinic have provided dental services to 12 local residents in the past year, not only providing them with quality dental care but also great understanding and flexibility to accommodate their needs. While the government initiative provides remuneration to the dentists, it is significantly less than the regular costs to the provider.

Micah Projects acknowledges the contribution of our local providers in participating in this scheme as we often struggle in assisting people access the dental care they require.



The 'MasterChefs' of the West End Dining Club.

West End Dining Club

The West End Dining Club is an activity that has resulted from the recognition that people who experience poverty and social isolation need to have access to good food and equally as important, good company. Every Tuesday evening, about 50 dinner guests are gathering in the Uniting Church hall in Sussex St, West End to share a home style meal. Half of the guests are people supported by Micah Projects, many of whom have recently moved into housing from homelessness. The other half of the guests are committed community volunteers who come to cook and most importantly, share the meal and company with all of the guests. The meal has become a highlight of the week for many of the dinner guests and something to look forward to.

The West End Dining Club has been made possible with a grant from StreetSmart Australia for establishment costs and purchase of ingredients. We are looking to partner with sponsors in order to ensure the activity can continue.

Micah Projects enhances 7 day response

In the past year, Micah Projects has been able to enhance our response to people we support and those seeking services over 7 days per week. A number of our programs now operate outreach services over 7 days, such as Street to Home which received recurrent funding to boost it to a 20 hour per day service over the whole week. We have organised a roster of the Leadership Team to ensure two team leaders are always available to support our workers on weekends from our home base at 162 Boundary St, South Brisbane.

This has been very effective and enables people greater access to our services over the weekend because they are able to contact staff at home base. We are therefore able to provide a better response to individuals and families by enhanced services and greater accessibility.

SERVICES PROVIDED

Number of people we are continuing to support July 2009 – June 2010

Team	Number of Families*	Number of Individuals
Social Inclusion Program	-	49
Assessment & Referral Team	433 (585 children)	880
Homeless Prevent	73 (178 children)	43
Forgotten Australians Support	65 (21 children)	411
Homefront	38 (16 children)	44
Families to Home	69 (186 children)	7
Participate in Prosperity	48 (105 children)	4
Resident Support Program	-	124
Romiga	-	3**
Street to Home	97 (116 children)	171
Young Mothers for Young Women	78 (116 children)	18
TOTAL	901 (1,323 children)	1,754

* Families are self-defined and can include couples (with or without children) and single adults with children.

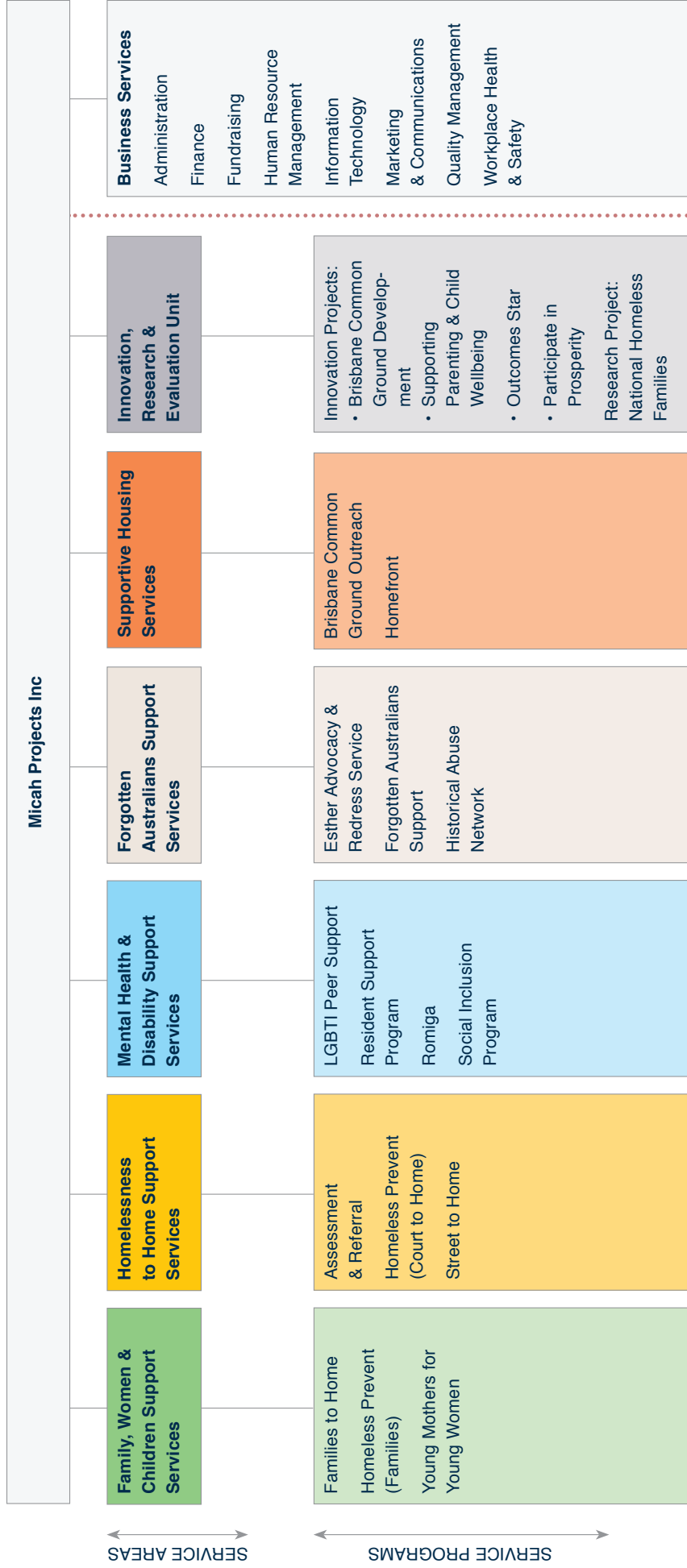
** Romiga supports 3 women in their home on a 24 hour / 7 day basis.

One-off contacts* July 2009 – June 2010

Type of contact	No. of contacts
By phone (across all sites)	11,342
In person (across all sites)	11,023
Street to Home (outreach)	10,270
TOTAL	32,635

* One-off contacts include the provision of information and referral to other services for individuals and families. After business hours, the Street to Home outreach service includes transport for and contact with people who are sleeping rough and/or intoxicated in public spaces across Brisbane.

MICAH PROJECTS SERVICES



MICAH PROJECTS STAFF

Micah Projects employed 111 staff members in the 2009-2010 financial year. We continue our commitment to being an equal opportunity employer and therefore, promote access to positions within Micah Projects to men and women of all ages from the diversity of social and cultural groups within the community (see graphs on page opposite).

The organisation is supported by over 40 regular volunteers, many of whom have been with Micah Projects for a number of years. Without their significant contribution, many activities of the organisation would not continue with such success. Volunteers currently work across Campbell's Club, the West End Dining Club, Brisbane Homelessness Service Centre, Business Services and Young Mothers for Young Women. Schools and businesses have also contributed to our volunteer activities with regular barbecues held at the BHSC and support at events, including the Moonlight Magic Dinner Dance, 50 Lives 50 Homes and the Christmas Hamper Appeal.

Sixteen students have been supported across the organisation from a variety of different studies including Social Work, Human Services, Community Welfare and Disability Work. Seven of these students have since been employed by Micah Projects in a number of our service areas.

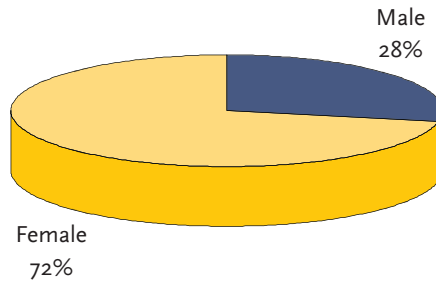
Micah Projects has continued to support and encourage staff to participate in professional development, both externally and internally. External studies completed by staff in 2009-2010 included Community Welfare, Disability, Accounting, IT, Assessment & Training, Business (Philanthropy & Nonprofit), Nursing and Physiotherapy. Congratulations to all staff that have successfully completed their studies this year!

Internal Professional Development has included Motivational Interviewing and Challenging Behaviours workshops delivered by Matthew Berry from Caraniche, Victoria. We have also been fortunate enough to be able to utilise the knowledge and skills of some international guests. Liz Harper, from St Mungo's (UK), facilitated a number of training sessions on The Outcomes Star (see page 18) to our service delivery teams and Suzanne Wagner, from Housing Innovations (USA), delivered training on Supportive Housing.

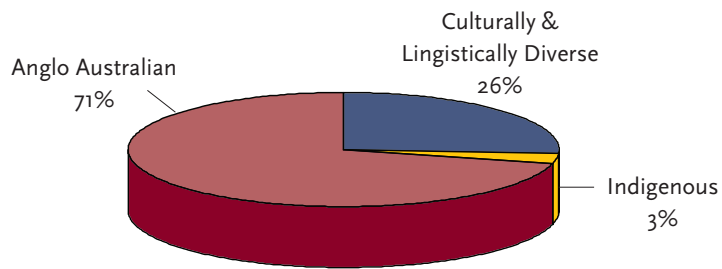


Bridget, Lachlan and Anthony Kinch celebrate Bridget achieving a Graduate Certificate in Business (Philanthropy & Nonprofit) Studies.

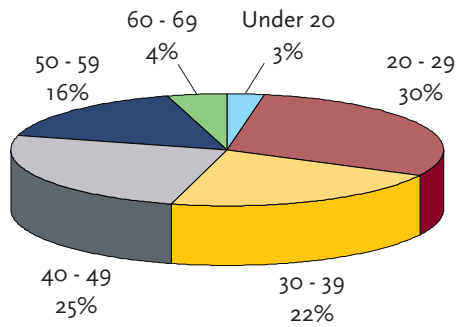
Staff Gender Breakdown



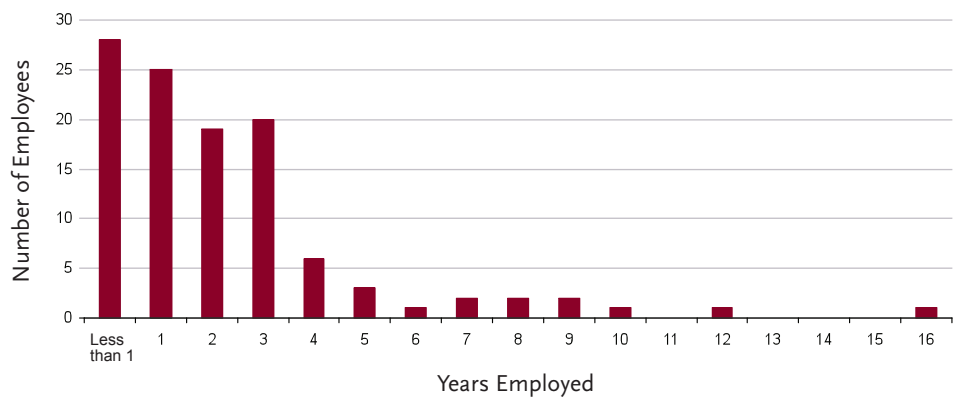
Staff Cultural Diversity



Staff Age Breakdown (years)



Staff Retention



AUSPICE PROJECTS

Supported Accommodation Providers Association

Once again in 2010, SAPA acknowledges the work of Micah Projects and their continued support of our association, particularly in its quest to provide training to staff of the private supported accommodation sector. We also thank Micah Projects for its leadership and significant input into the development of the long awaited and much anticipated Memorandum of Understanding between the Community Sector and operators of level three Residential Services.

The delivery of support services to residents of inner Brisbane SAPA facilities has been the role of the Micah Projects Resident Support Program. We thank the management and staff of this team for their sensitive handling of the many issues which arise and for the generous manner in which they carry out their work.

The Moonlight Magic Dinner Dance is a highlight of the year for many residents of our facilities and we extend our congratulations and sincere thanks to Micah Projects for their ongoing stewardship of this event. This year particularly we would like to acknowledge the efforts put into the accessing of evening wear and accessories for residents which made the night even more special for them.

Damien Negus
President

Forde Foundation

The Queensland Government concluded its implementation of the Redress Scheme in 2009. Over 10,000 Queenslanders applied, demonstrating their eligibility for services including access to the Forde Foundation.

The Review of the Forde Foundation was undertaken, acknowledging the need to reconsider how the Foundation operated now that Redress had been progressed and the potentially higher demand for individual grants than available resources.

The Forde Foundation was collocated at Lotus Place. The review led to changes in policy and practice with the Forde Foundation Secretariat now located back in the Department of Communities and with the eligibility for grants changing to include applications by non government organisations to undertake projects with the participation of Forgotten Australians.

We look forward to the new working arrangements with the Forde Foundation Board and thank the Board members for their ongoing support and engagement with Micah Projects Business Services and staff.

Family Inclusion Network

In 2007/08 the Family Inclusion Network Queensland Project engaged parents and workers in the state's child protection system. The Project made recommendations to the then Department of Child Safety about how to involve and engage parents in child protection processes. Following the success of this project, Micah Projects has auspiced a second project focused on the Brisbane region. This Project is addressing one of the 2007/08 findings where parents identified the invisibility of community family support services. The 2010 FIN Brisbane Project aims to facilitate collaboration between services and the Department to ensure accessibility for vulnerable parents and their children.

The aim of the project over a 12 month period is to develop collaborative partnerships with the Department of Communities, Child Safety Services, service providers and families in contact with the Department so as to inform the future development of the family support service system. A steering group comprising of government and community sector workers has been formed to oversee the project. The project will map a continuum of family support services in the Brisbane region as well as support the development of a strong and active family support network, supporting parents and significant others to actively participate in the child protection process. Parents are being engaged to provide valuable information and feedback about their experiences in the child protection system which will be documented and fed back to the Department and service providers.

Micah Projects is committed to working collaboratively to ensure a balanced family and children's service system is developed. It is important to support vulnerable families before the need for intervention from the child protection system. We are also committed to advocating for parents to be recognised as critical partners in any statutory interventions intended to improve the safety and wellbeing of children. Parental involvement is vital if children are to know and maintain connection with family and culture. As an organisation involved with the Stolen Generations, Forgotten Australians and British Child Migrants, we know of the harm caused when a person loses knowledge and/or connection with their family and culture of origin and identity. The consequences can create significant barriers to a quality of life, such as healthy relationships, capacity for work, social and economic participation and connection with self.



Young family in temporary accommodation. Photography: Patrick Hamilton.

INNOVATION, RESEARCH & EVALUATION

Research Project - National Homeless Families

Micah Projects was successful in receiving a grant from the federal Department of Families, Housing, Community Services and Indigenous Affairs (FaHCSIA) National Homelessness Research program in partnership with the University of Queensland. The project will examine best practice in crisis intervention and support services for families at risk of homelessness. The Innovation, Research and Evaluation (IRE) Unit is working with Dr Karen Healy, Professor, School of Social Work and Human Services, UQ and a steering group comprised of Brisbane Domestic Violence Advocacy Service (BDVAS), Brisbane Youth Service (BYS), FaHCSIA, Queensland's Department of Communities, Mater Health Services and Micah Projects Family, Women and Children Support Services. Planning began early in 2010 and field work on the project has recently commenced.

The project's participants are families who receive family support services or crisis intervention services from Micah Projects, BDVAS and BYS. In the first stage one adult member from up to 80 families will be interviewed to gather baseline data about their family's circumstances and goals. Subsequent interviews will focus on assessing progress towards achieving those goals. The project will also involve practice reflection meetings and support plan reviews with Micah Projects support and advocacy workers working with vulnerable families. It is hoped the research will inform practice for all homelessness services working with families across Australia.

Innovation Project - Outcomes Star Implementation and Review

The Outcomes Star is an innovative tool for measuring and supporting change with people and Micah Projects continues to implement and review its use across the organisation. Liz Harper from St Mungo's, London (the organisation that developed the tool) provides support in this via email, Skype and a recent visit. With Liz we were able to reflect on our use of the tool and to identify how we can target implementation support. In consultation with the Micah Projects Planned Support Working Party, the IRE Unit is now working with team leaders and senior practitioners to address specific implementation issues and to create or improve tools to assess needs and risks, and create support plans. We continue to review the Star's effectiveness in measuring progress in support planning and to assist practice reflection.

Innovation Project - Supporting Parenting and Child Wellbeing across Micah Projects

This year Micah Projects initiated an activity to enhance the capacity of all our teams to identify and respond to the unique needs of children whom we support along with their parents. To achieve these improvements the IRE Unit and Family, Women and Children Support Services have established a partnership with Dr Robyn Mildon, Director of Knowledge Exchange with the Parenting Research Centre in Victoria. In June Dr Mildon facilitated preliminary workshops with representatives from Micah Projects to clarify the aims, target groups and intended outcomes of an organisation-wide practice guide for supporting parenting and child wellbeing. Dr Mildon will continue to work with Micah Projects in 2010 and 2011 to develop these practice guidelines.

PARTNERS

Micah Projects acknowledges and thanks the state, local and federal governments as the primary funders of our work.

Queensland Government

Department of Communities, Housing and Homelessness services
Department of Communities, Disability and Community Care services
Department of Employment, Economic Development and Innovation
Department of Communities, Child Safety services

Brisbane City Council

Australian Government

Department of Families, Housing, Community Services and Indigenous Affairs (FaHCSIA)

We acknowledge all of the government, businesses, community organisations and individuals with whom we partner and collaborate to deliver better outcomes for the people we support.

Government

Australian National Library
Australian National Museum
Brisbane City Council – Homeless Response
Centrelink
Commonwealth Ombudsman
Department of Communities, Child Safety services
Department of Communities, Housing & Homelessness services
Department of Communities, Office of Women
Department of Communities, Youth and Family Support services
Department of Justice and Attorney General
Department of Public Works, Project Services
Medicare
Queensland Health
Queensland Ombudsman
Queensland Police Service
TAFE Queensland

Universities/Research

Griffith University, Research Centre for Clinical and Community Practice Innovation
University of Queensland, School of Social Work and Human Services

Business, Community Organisations & Individuals

4Walls
99 Consulting
139 Club
Access Arts
Alliance of Forgotten Australians
Australian Common Ground Alliance
Bayside Tenancy and Advice Advocacy Service
Beeralong Community Garden

BRiC Housing
Brisbane Business & Hospitality Training
Brisbane Domestic Violence Advocacy Service
Brisbane Housing Company
Brisbane Youth Service
Bruce Shaw Lawyers
Career Employment Australia
Career Keys
Centacare SWBCOP Homeless Programs
Churches of Christ - Care Housing
Clare Homes
Common Ground USA
Dennis Ryan (Homeopath)
Dr Paul Cleary (General Practitioner)
Dr Peter Norris (General Practitioner)
Families Australia
Forde Foundation
Gateway Housing
Goori Referral Centre
Help Enterprises
Homeless Health Outreach Team
Homeless Persons' Legal Clinic (QPILCH)
Housing Innovations, USA
INCH Housing
Jemma Taylor (Acupuncturist)
Kumara Indigenous Family Care
Kyabra Community Association
Lands Community Services
Legal Aid
Link-Up (Qld) Aboriginal Corporation
Lisa O, Flexi Care (Podiatrist)
Mangrove Housing
Mater Health Services
Mater Parent Aide
Mission Australia
Murri Watch
NAC Consulting
Olpac
Othila's Young Women's Housing and Support Service
OzCare
Queensland Association for Healthy Communities
Parenting Research Centre
Peter Hegedus & Soul Vision Films
Reclink
Red Cross Training Services
Relationships Australia After Care Resource Centre (ARC)
RLW Contracting
Ros Rhodes (Bowen Therapist)
Salvation Army Pindari Women's Hostel
Salvation Army Training Services
SANDBAG
Save the Children
Spiritus
St Johns Ambulance First Aid
St Mungo's, UK
St Vincent De Paul Society
Supported Accommodation Providers Association
Welfare Rights Centre
Women Against Violence Support Service (WAVSS)
Youth and Family Services (Logan City)

DONORS, SUPPORTERS & VOLUNTEERS

Micah Projects acknowledges the many schools, businesses, government and community organisations, community groups and individuals who provide their time, efforts, goods and give financially to support the people who access our services. Your generosity is vital and we are so grateful for it.

Trusts and Foundations

Lord Mayor's Christmas Appeal
Lord Mayor's Community Trust
Mater Foundation
Mercy Foundation
Pratt Foundation
Queensland Association for Healthy Communities
StreetSmart Australia

Businesses, Schools, Organisations and Individuals

99 Consulting
Agapi Hair & Beauty
Albany Creek Kindergarten
All Hallows' School
ARIA Property International
Augustinian Volunteers Australia
Australian Taxation Office
Avid Reader
Barry Dennien
Brenda Burgman
Brisbane Convention & Exhibition Centre
Bryan and Ann Lynch
Bunnings Rocklea
Centrelink South Brisbane
Chris Harkin
Coles West End
Colour Chiefs
Community Angels
Community Can Do Removals
Cone Queen (Sofija Tahiraj)
Councillor Geraldine Knapp
D & M Keenan
Darwens Auto Body Repairs
Daryl Clifford
Data Centre Technologies
Ed and Carol Vardy
Ed Hope Hair
Empower Arts
Eureka Steel Fixing (Qld) Pty Ltd
Force Group of Companies
G & L Produce
G Marfan
GIVIT
Grocon Constructions
Heather Mac's Homemade Goodies
Hyteco
J & G Roberts
J & M Crombie

Jak Vaessen and friends
Janome Everton Park
John Bird
Kay and Ian Johnston
Kelvin Grove Landscape Supplies
Lourdes Hill College
Margaret Ridley and Darryl Clifford
Margaret Rodgers
Medico Legal Insurance Group
Metro Central Community Church
Michael Eather
Michael Good
Mick's Nuts
Minter Ellison
Moggill Road Dental
Mr and Mrs Sheehan
Mt Alvernia College
Mt Maria College
NAC Consulting
Narelle Mullins
Norris Hair and Beauty
Paladar Fumior Salon
Patrick Hamilton Photography
Peter Lee
Peter Steele
Premier Anna Bligh
Probus
Project Sunrise
Pylara Nurseries
QUOTA International of South Brisbane
RBS Morgans
Refugee Health Queensland
Residential Care Services, Herston Lodge
Ricco Schadwill
Rob Deshon
Rowland
Sister Jean Gormley
Sisters of Mercy
St Ambrose's Primary School
St Elizabeth's School Tarragindi
St Mary's Community in Exile
St Peter Claver College
St Vincent de Paul, Bulimba Conference
Stream Consultants Australia
Summit Fleet Leasing and Management
Sunshine Dry Cleaners
Tony Towler
Volunteering Queensland
Wesley Corporate Health
West End Uniting Church
Willow House

Wilston Court
Yellow Cabs
Yeronga State High School
Zonta Club of Brisbane River

Our volunteers are key to our social inclusion activities and are highly valued by people accessing our services.

Volunteers

Amanda Rosenfeld, Angela Pacheco, Anna-Claire Zanetti, Blair Ainsford, Celeste Pola, Christine Rose, Daisy Bradford, Deanne Higgins, Dolores Creevey, Erica Calway, Indus DeCouto, Janice Knight, Jenny Dex, Joan Pincus, Joy Reiken, Julian Walsh, Kai Borchet, Kate Doolan, Kate Sangha, Kay Johnston, Kim Broderick, Kris Bentley, Margot Schmidt, Maria O'Neill, Mary MacMahon, Maureen Connelly, Meg Anderson, Melissa Leitch, Michael O'Neill, Miya Xiao, Nancye Reid, Patricia Holloway, Peter Burke, Phil Trovato, Tania Michiels, Ursula Farrelly, Yvonne Davis and Yvonne Dunne.

Every year our Christmas Hamper Appeal is strongly supported by the community and in 2009 we had almost 150 volunteers assisting to pack and deliver food hampers and toys to families and individuals across Brisbane. There are too many volunteers to name here, but you all know who you are and we hope you know how much you are appreciated!

In June 2010 we had nearly 100 volunteers assist with the 50 Lives 50 Homes registry week; again, too numerous to name here. We thank you for your energy during this week and the respect you showed to each individual you met on the streets.

We acknowledge the generosity and strong commitment from the St Mary's Community South Brisbane and the broader West End community to promote and support our work.

We couldn't do it without you.

JUST ONE PERSON...



The Art Group would not be possible without the generosity of Mr Peter Steele.

For years Micah Projects had been aware of the artistic talents of many of the people regularly accessing our services, particularly Indigenous people sleeping rough. We wanted to engage people around their art and give them a space to create and support each other's creativity. We knew we wanted to start an art group but were restricted because we could not find government or philanthropic funding to support the development of the group and to purchase materials. It was through a burgeoning relationship with one of our regular donors that this vision became a reality.

Mr Peter Steele and his company, Medico Legal Insurance Group, had supported the Micah Projects Christmas Hamper Appeal for several years. When thanking Peter for his Christmas contribution in 2008, a conversation started in which we discovered a mutual interest in supporting local artists.

Peter made a donation of \$5,000 to go towards the purchase of paints, brushes, canvasses and easels and the Art Group was on its way! In early 2009 the group started to meet at the Brisbane Homelessness Service Centre with the support of volunteers. It quickly became a popular activity and the group now meets twice per week. For many of the artists, this is the highlight of their week – the opportunity to express themselves and create with friends in a supportive environment (read more on page 9).

Nearly two years on, Peter's donation continues to purchase the materials the artists require and is the reason the Art Group can go on (Peter also donated a digital camera so the artists could capture images that would aid their creativity).

The Art Group say they feel honoured and privileged to have their very own patron. One gift, from one person, has made the world of difference.

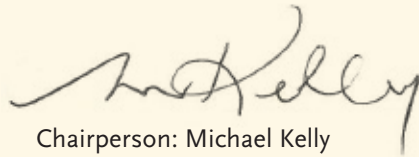
STATEMENT BY MEMBERS

The Board has determined that the association is not a reporting entity and that this special purpose financial report should be prepared in accordance with the accounting policies outlined in Note 1 to the financial statements.

The Board declares that:

1. the financial statements and notes present fairly the association's financial position as at 30 June 2010 and its performance for the year ended on that date in accordance with the accounting policies described in Note 1 to the financial statements; and
2. in the Board's opinion there are reasonable grounds to believe that the association will be able to pay its debts as and when they become due and payable.

This declaration is made in accordance with a resolution of the Board:



Chairperson: Michael Kelly



Treasurer: Michael Booth
Thursday, 14 October 2010

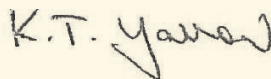
DISCLAIMER

The following financial data was prepared by Micah Projects Inc. to provide additional information to the association's members. Micah Projects Inc. is solely responsible for the additional information. Accounting Standards and UIG Consensus Views have not been adopted in the preparation of the additional information.

Although we have audited the preceding general purpose financial report no audit or review of the additional information has been performed and accordingly no assurance is expressed.

To the extent permitted by law, we do not accept liability for any loss or damage which any person, other than the association, may suffer arising from any negligence on our part. No person should rely on the following financial data without having an audit or review conducted.

We do not accept responsibility to any person for the contents of the following financial data.



Kevin Yarrow
Arrow Accountants
Brisbane
Friday, 15 October 2010

STATEMENT OF REVENUE & EXPENSES FOR THE YEAR ENDED 30 JUNE 2010

INCOME	this year	last year
Grants (Cmlth) OP - Recurrent	23,365.69	17,838.72
Grants (Cmlth) OP - Non-Recurrent	38,490.65	74,139.76
Grants (State) OP - Recurrent	6,208,323.36	5,109,045.00
Grants (State) OP - Non-Recurrent	1,322,190.55	656,277.36
Grants (Local) OP - Non-Recurrent	33,498.24	15,000.00
Grants - Other	59,000.00	36,183.73
Donations Received	94,153.71	77,361.25
Donations (Public Collections)	37,074.50	80,410.50
Contributions (Members)	753.32	650.50
Contributions (Public)	392.00	0.00
Sale of Goods	0.00	400.00
Fees and Charges - Restricted	8,600.00	12,000.00
Fees and Charges - Unrestricted	0.00	21,222.80
Fees and Charges - Other	0.00	30,558.50
Fees and Charge - Sponsorship and Licensing	17,500.00	0.00
Ticket Sales	19,000.03	11,825.62
Rental Income	130.45	2,518.52
Dividends Received	423.63	1,245.80
Other/Sundry Income	184,720.63	195,761.21
Disposal of Motor Vehicle	12,400.84	10.84
Cancelled Cheques	0.00	1,835.37
Unspent Funds Carried Forward	(45,689.10)	(9,262.80)
Interest - Restricted	4,846.33	0.00
Interest - Unrestricted	26,688.48	39,633.35
TOTAL INCOME	8,045,863.31	6,374,656.03

OVERHEAD EXPENSES

Accountancy	30,000.00	27,000.00
Advertising	21,815.82	6,923.23
Auspicing Fees	502.15	0.00
Audit Fees	16,159.84	10,295.96
Asset Purchased < \$5000	167,219.33	2,712.65
Asset Purchased Depreciation	156,272.10	58,466.69
Bank Charges	8,780.04	4,295.09
Business Planning Cost	1,795.00	76,897.15
Client Support Services	511,826.18	457,595.25
Client Support Consumables	87,180.39	62,326.17
Computer Supplies	111,433.43	239,679.61
Consultancy fees	43,475.95	146,482.37
Depreciation	49,285.36	42,332.19
Donations	6,195.87	1,840.00
Employment Support	37,384.79	17,962.50
Fees and Charges	32,443.53	6,115.95
Hire - Plant and Equipment	21,330.64	17,614.88

OVERHEAD EXPENSES CONTINUED

Insurance - General	7,358.94	6,599.18
Insurance - Public Liability	3,490.92	3,297.44
Insurance - Prof Indemnity	9,561.45	9,634.67
Insurance - Volunteers	1,299.97	1,250.11
Lease Payments	256,744.84	222,061.11
Legal Expenses	260.65	1,328.71
Fuel and Oil	91,476.82	72,148.52
Insurance	38,437.56	37,976.26
Motor Vehicle Repairs Maintenance	39,271.31	20,647.97
Motor Vehicle Registration	2,186.29	1,562.41
Management Fee Paid	0.00	29,838.95
Meeting Expenses	126,221.52	94,964.97
Other	11,250.02	146.15
Postage	9,724.68	13,752.79
Printing and Stationery	99,684.26	67,495.58
Publications & Info Resources	13,093.18	5,358.54
Rent	176,862.91	83,395.36
Repairs and Maintenance	132,027.50	224,920.33
Salary Sacrifice	597,890.14	482,984.25
Salaries - Other	487,734.39	301,020.85
Security	5,488.77	5,108.57
Staff Training and Development	76,266.33	52,323.49
Staff Amenities	26,149.51	26,882.22
Subscriptions and Memberships	9,863.93	10,554.86
Sundry Expenses	13,807.63	8,432.41
Superannuation	399,047.24	298,115.51
Telephone	155,592.85	133,831.69
Travel and Accommodation	134,603.18	53,969.30
Utilities	62,846.98	51,958.32
Volunteer Costs	1,111.14	821.03
Wages	3,396,491.89	2,541,515.03
Annual Leave Expense	255,462.01	187,221.01
Long Service Leave Expense	18,769.10	7,662.10
Sick Leave Expense	88,977.51	68,827.96
Recruitment Expense	5,400.48	0.00
Workcover	32,579.04	33,563.50
TOTAL OVERHEAD EXPENSES	(8,090,135.36)	(6,339,710.84)
NET LOSS	(44,272.05)	34,945.19

BALANCE SHEET

AS AT 30 JUNE 2010

ASSETS

CURRENT ASSETS

	this year	last year
Cash and cash equivalents	1,555,642.90	1,184,228.26
Trade and other receivables	60,683.41	75,996.69
Financial assets	67,329.11	50,416.63
Other current assets	20,586.81	36,408.98
TOTAL CURRENT ASSETS	1,704,242.23	1,347,050.56

NON CURRENT ASSETS

Property, Plant and Equipment	56,299.15	77,360.67
TOTAL NON CURRENT ASSETS	56,299.15	77,360.67
TOTAL ASSETS	1,760,541.38	1,424,411.23

LIABILITIES

CURRENT LIABILITIES

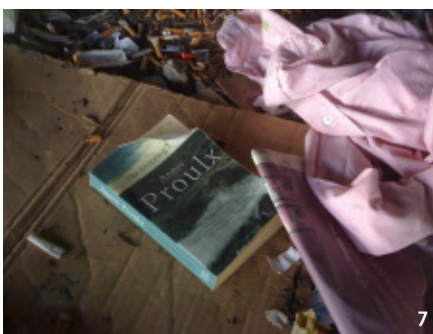
Bank overdrafts	3,355.68	1,410.12
Trade and other payables	540,900.60	190,464.49
Short-term provisions	521,374.24	582,625.43
Other current liabilities	444,809.63	335,346.09
TOTAL CURRENT LIABILITIES	1,510,440.15	1,109,846.13

NON CURRENT LIABILITIES

Financial liabilities	31,984.08	55,234.78
Long-term provisions	88,124.66	85,065.78
TOTAL NON CURRENT LIABILITIES	120,108.74	140,300.56
TOTAL LIABILITIES	1,630,548.89	1,250,146.69
NET ASSETS	129,992.49	174,264.54

EQUITY

Reserves	49,827.66	49,827.66
Retained earnings	80,164.83	124,436.88
TOTAL EQUITY	129,992.49	174,264.54





A campaign to house and support Brisbane's most vulnerable homeless people.



OPPOSITE PAGE

1. 50 Lives 50 Homes gathering before dawn at All Hallows' School.
2. Parents from the All Hallows' School community who cooked breakfast for the surveying volunteers.
3. Mapping the 'hot spots' for the volunteers to canvass.
4. Naomi Brown from the Street to Home team & an interviewee.
5. An interviewee & Jim DeCouto from the Street to Home team.
- 6 & 7. A Brisbane City squat.
8. Completing the Vulnerability Index survey in King George Square.
9. Our wonderful volunteers on the last survey morning.

ABOVE

1. Holy Rosary School Indigenous dancers at the Homeless to Home Healthcare Forum.
2. Premier Anna Bligh addressing the Forum.
3. Dr Jim O'Connell from Boston Health Care for the Homeless, Beth Sandor and Becky Kanis from Common Ground USA with Karyn Walsh from Micah Projects.
4. Volunteers Joanne Mahon, Mal Causer, Mary Raineri & Terry Fitzpatrick with their certificates of appreciation.

SUPPORT MICAH PROJECTS



Volunteers packing the hampers on Christmas Eve 2009.

It is so easy to support Micah Projects and make a difference in Brisbane.

Poverty, social exclusion and isolation continue to impact on many people who live in Brisbane and the housing crisis shows no signs of abating. The high cost of living compounds the vulnerability of people subsisting on low incomes. Micah Projects is assisting people to not only have their basic needs met but to enjoy a quality of life that we in Australia expect and hope for each other.

You can assist Micah Projects to continue to provide support for people who are excluded or vulnerable by becoming a member or by giving a cash donation.

Yes, I wish to become a member of Micah Projects Inc.

\$5.50 (annual fee inc GST)

Also included is my tax-deductible donation for the amount of:

\$50

\$25

\$100

Other \$

Total amount \$

Name

Address

Ph

Email

Please make cheques payable to Micah Projects Inc or charge my credit card:

Visa Mastercard

Card Number _ _ _ _ / _ _ _ _ / _ _ _ _ / _ _ _ _

Exp Date _ _ / _ _

Name on card

Signature

MICAH PROJECTS INC



Breaking Social Isolation
Building Community

Phone (07) 3029 7000 | Fax (07) 3029 7029

Ground Floor, 162 Boundary St, West End Q 4101

PO Box 3449 South Brisbane Q 4101

info@micahprojects.org.au | www.micahprojects.org.au



CONTACT US...

MICAH PROJECTS INC
www.micahprojects.org.au

Phone (07) 3029 7000 | Fax (07) 3029 7029
Ground Floor, 162 Boundary St, West End Q 4101
PO Box 3449 South Brisbane Q 4101
info@micahprojects.org.au
ABN 76 409 721 192

BRISBANE HOMELESSNESS SERVICE CENTRE (BHSC)
Homelessness to Home Support Services

Phone (07) 3036 4444 | Fax (07) 3036 4400
62 - 64 Peel Street, South Brisbane Q 4101
info@micahprojects.org.au

LOTUS PLACE
Forgotten Australians Support Services

Phone (07) 3844 0966 | Fax (07) 3844 6706
18 Merivale Street, South Brisbane Q 4101
info@micahprojects.org.au

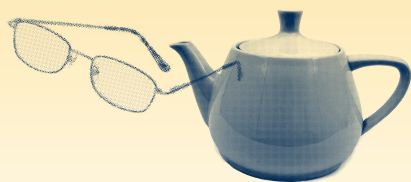
BUTTERFLY PLACE & CATERPILLAR HOUSE
Young Mothers for Young Women (YMYW)

Phone (07) 3013 6000 | Fax (07) 3013 6013
Butterfly Place: 11 Sussex Street, West End, Q 4101
Caterpillar House: 111 Vulture St, West End, Q 4101
info@micahprojects.org.au

Public Transport
Bus route 199
Nearest train station to all locations is South Brisbane.

Find us on Twitter & Facebook

printed on 100% recycled paper



MICAH PROJECTS INC



**Breaking Social Isolation
Building Community**

MICAH PROJECTS INC

Phone (07) 3029 7000 | Fax (07) 3029 7029
Ground Floor, 162 Boundary St, West End Q 4101
PO Box 3449 South Brisbane Q 4101
info@micahprojects.org.au
www.micahprojects.org.au

Micah Projects Inc is funded by

