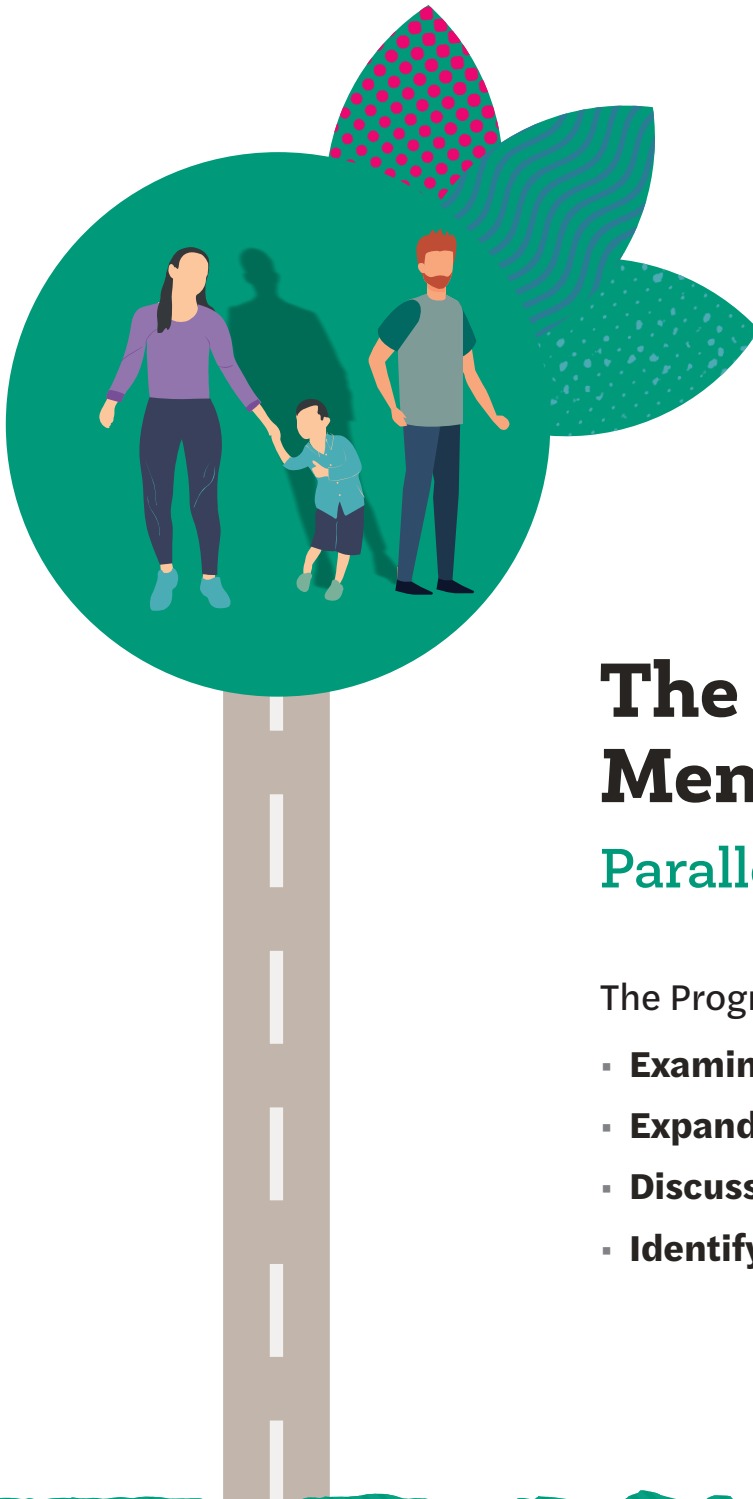




MICAH PROJECTS

Breaking Social Isolation
Building Community



The Safer and Accountable Men's Program

Parallel Participant Journeys

The Program helps participants to:

- **Examine** their belief system and behaviours that support violence
- **Expand** definitions of violence and controlling behaviours
- **Discuss** the effects of violence on women, children, and themselves
- **Identify** and practice non-controlling alternatives.

The Safer and Accountable Men's Program

Parallel Participant Journeys

Person using violence (PUV)

Referred to the SAM Day Program by the North Brisbane Vulnerable Persons Unit (VPU).

Previously demonstrated high risk behaviour patterns.

History of drug and alcohol use. Currently living together.

Recently recommenced the relationship with the VS.

There was a previous domestic violence order which expired one month prior to the referral.

PUV was motivated to engage in the program.

Victim Survivor (VS)

Identified as Aboriginal.

Previously supported by BDVS and referred to the Brisbane High Risk Team.

Victim survivor was already linked in with several services and supports prior to Women's advocate engagement.

REFERRAL

HIGH RISK

OTHER FACTORS

Topics

The topics covered in sessions over 16 weeks include:

- Nonviolence
- Non-threatening behavior
- Respect
- Support and trust
- Accountability and honesty
- Sexual respect
- Shared responsibility
- Economic partnership
- Responsible parenting
- Negotiation and fairness

The Role of Women's Advocate (WA)

The role of the WA is to offer ongoing **support** including:

- Risk assessment and safety planning
- Information sharing
- Advocacy and referrals

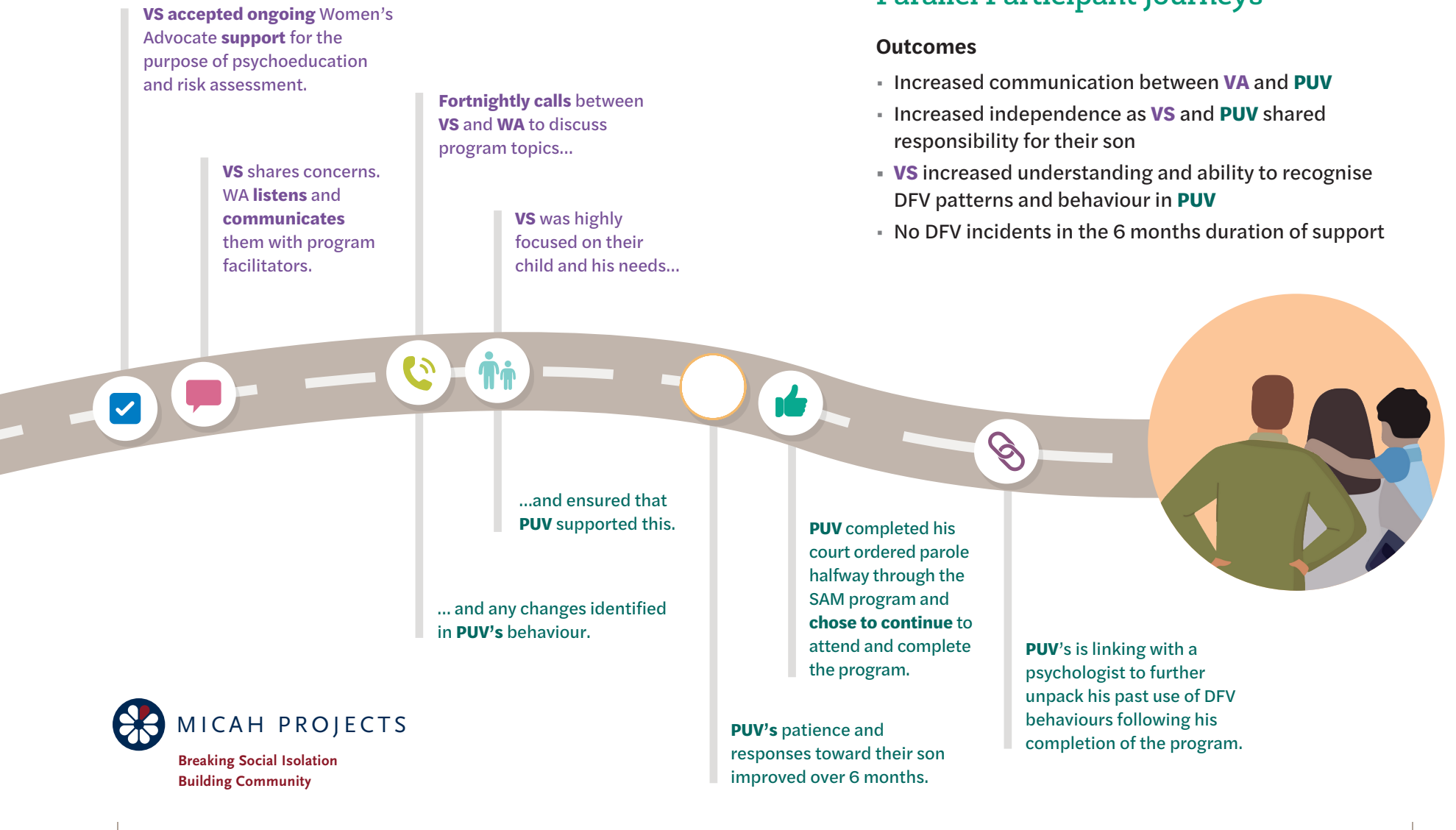
to partners and/or ex-partners of participants commencing the program who have been impacted by their violence.

The Safer and Accountable Men's Program

Parallel Participant Journeys

Outcomes

- Increased communication between **VA** and **PUV**
- Increased independence as **VS** and **PUV** shared responsibility for their son
- **VS** increased understanding and ability to recognise DFV patterns and behaviour in **PUV**
- No DFV incidents in the 6 months duration of support



MICAH PROJECTS

Breaking Social Isolation
Building Community

Over 6 months period PUV's engagement in the SAM program