

The Poverty Trap Impacting Older Women

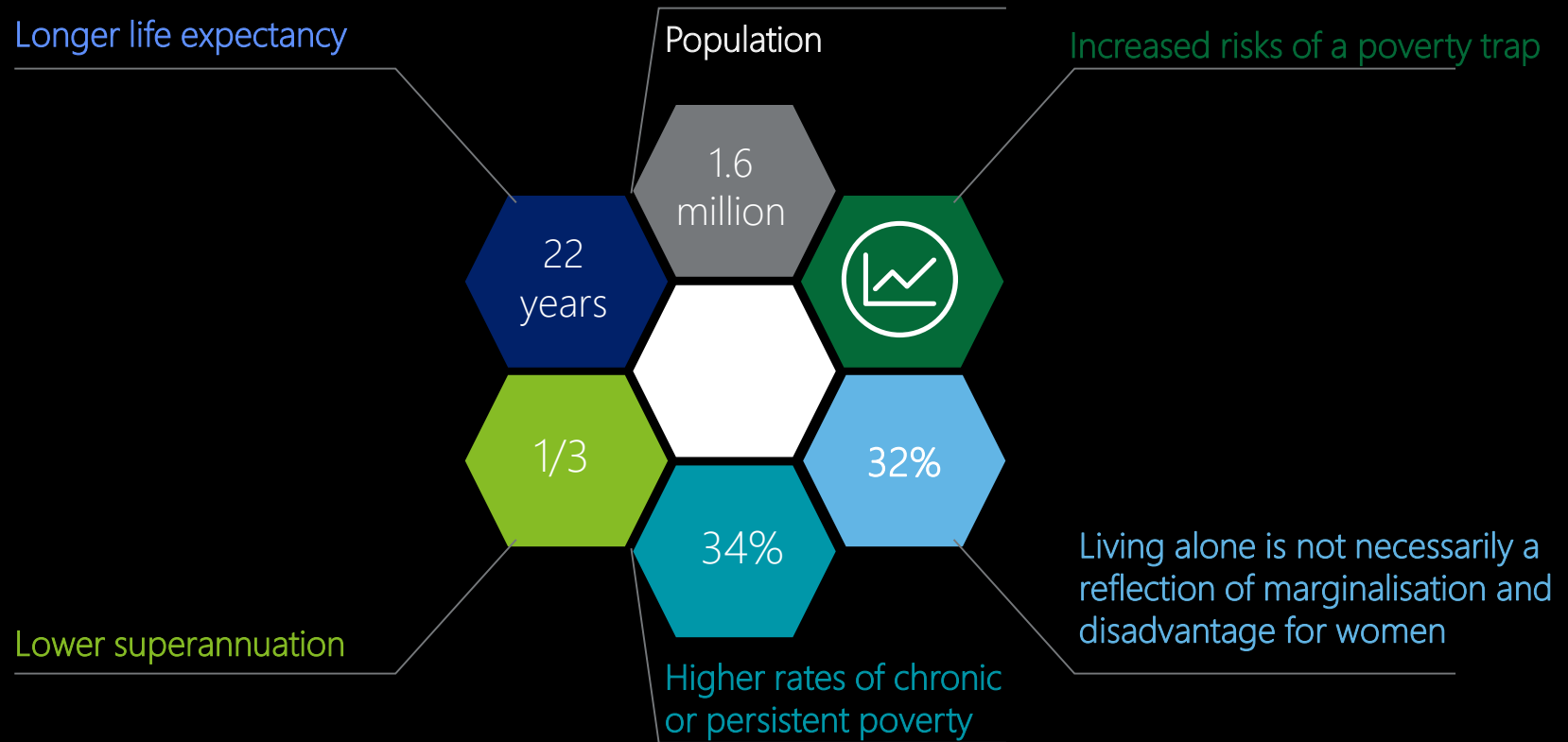
Natasha Doherty

Partner – Deloitte Access Economics

16 October 2018

The issue of elderly women and poverty

The Context



"In a climate of what might be described as 'taking the foot off the gas' possibly the most surprising element in this investigation was that little has changed".*

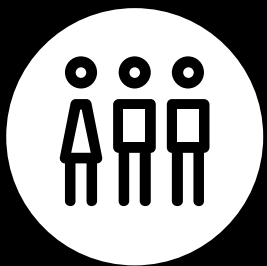
"For older women, in some areas, their situation is getting worse because persistent gender inequity continues".

*SOURCE: Lord Mayor's Charitable Foundation (2016). Times of our lives: Building opportunity and capacity for the economic and social participation of older Australian women. <https://www.lmcf.org.au/getmedia/23a2ebd6-b2dc-48b1-bc81-59e1bc0f27cd/2016-03-07-LMCF-Time-of-Our-Lives-Report.pdf.aspx>, page 28.

The Knowledge Base

- There is a need to understand the diversity of women's experiences across and within age cohorts as the experiences of a 55 year old woman will be very different to those of an 80 year old woman.
- The literature also acknowledged a common understanding of the following concepts pertaining to the issue of poverty amongst older women.

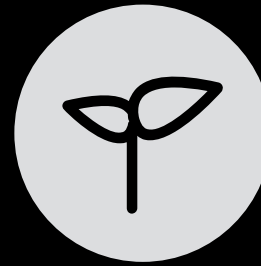
Disadvantage



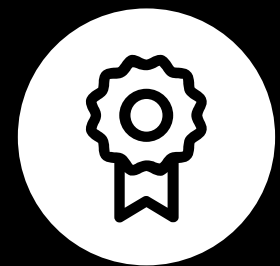
Vulnerability



Resilience



Successful ageing

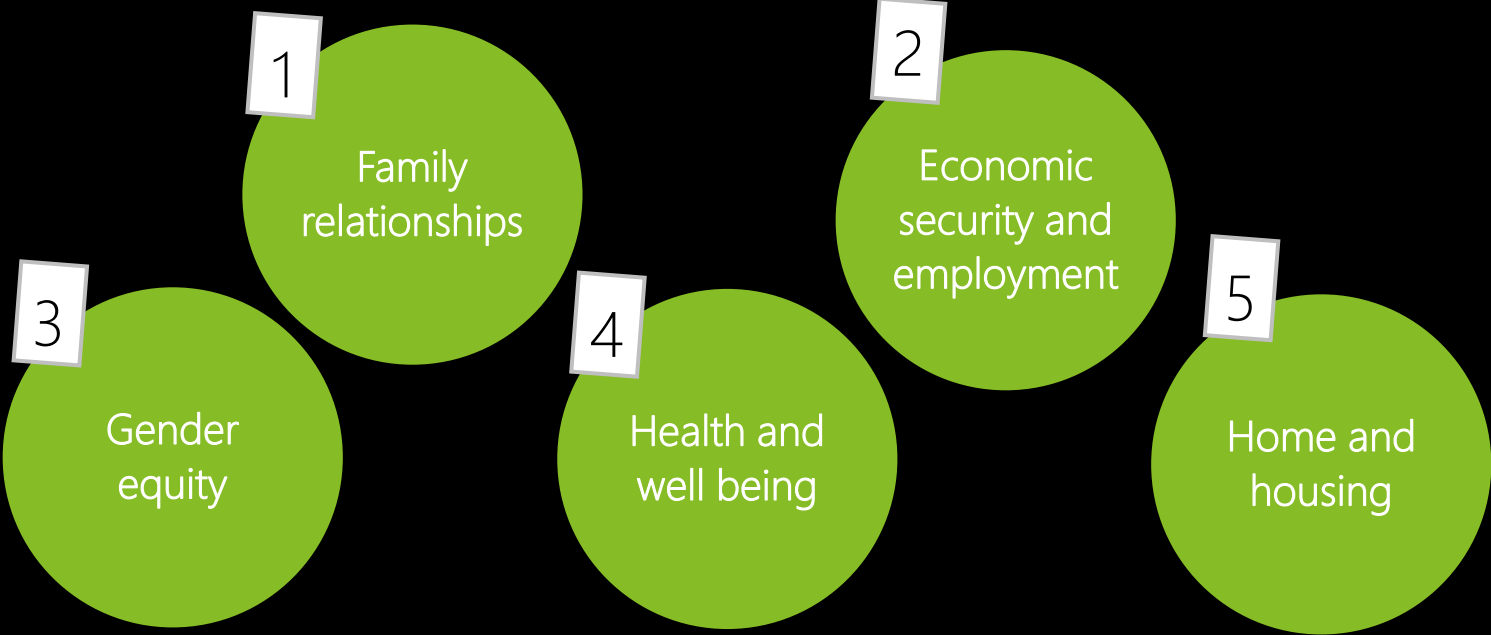


The Knowledge Base



Life circumstance impacts for older women

The Areas of Life Changers



"Poverty is not caused only by individual circumstances, but also by major inequalities built into the structure of Australian society. Some of the main causes of this inequality and poverty are access to work and income, education, housing, health and community services".

SOURCE: Australian Council of Social Service (ACOSS) (2011). Poverty and its Causes. Poverty Report Update. http://acoss.org.au/images/uploads/ACOSS_Poverty_October_2011.pdf, page 8.

Key Issues

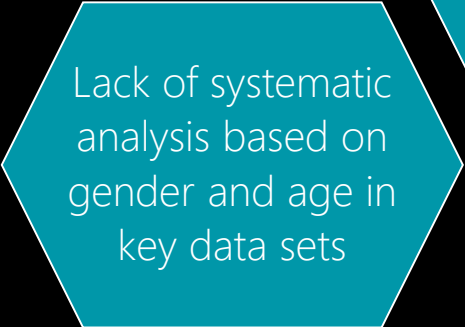
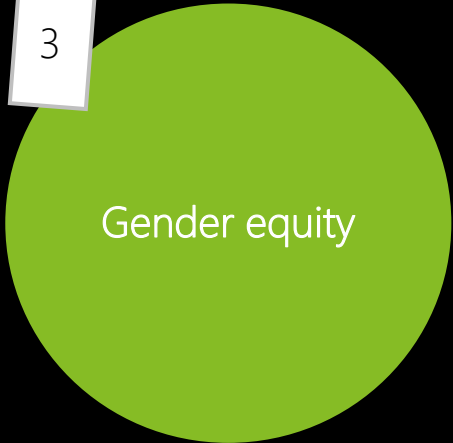


Key Issues



Key Issues

3



Area of life circumstance changes

Key Issues



Key Issues



Area of life circumstance changes

Strategic opportunities and challenges for older women in Australia

The Barriers

Insufficient financial security for older age

Lack of public discourse about age and gender discrimination

Housing unaffordability and lack of public housing stock

Balancing family and work responsibilities

Changing nature of family

Addressing the persistence and accumulation of inequality and disadvantage

The Next Steps

1 Undertake further data analysis

Engage and investigate the diverse experiences of different female cohorts

Analyse data in relation to media activity that reports on gender equity

3 Innovate for new solutions

Use technology to discuss and develop new ideas to solve problems and connect

Develop and evaluate enterprise initiatives

2 Embrace networks, initiatives and lifelong learning

Engage women about how they can optimise their financial security

Role of women's networks in promoting health, well being and policy debate

Enhance lifelong learning for both

Deloitte.

Access Economics



Natasha Doherty – Partner

National Lead Partner in Program Evaluation

Health and Social Policy

Deloitte Access Economics

Email: ndoherty@deloitte.com.au

Deloitte refers to one or more of Deloitte Touche Tohmatsu Limited, a UK private company limited by guarantee, and its network of member firms, each of which is a legally separate and independent entity. Please see www.deloitte.com/au/about for a detailed description of the legal structure of Deloitte Touche Tohmatsu Limited and its member firms.

About Deloitte

Deloitte provides audit, tax, consulting, and financial advisory services to public and private clients spanning multiple industries. With a globally connected network of member firms in more than 150 countries, Deloitte brings world-class capabilities and high-quality service to clients, delivering the insights they need to address their most complex business challenges. Deloitte's approximately 200,000 professionals are committed to becoming the standard of excellence.

About Deloitte Australia

In Australia, the member firm is the Australian partnership of Deloitte Touche Tohmatsu. As one of Australia's leading professional services firms, Deloitte Touche Tohmatsu and its affiliates provide audit, tax, consulting, and financial advisory services through approximately 6000 people across the country. Focused on the creation of value and growth, and known as an employer of choice for innovative human resources programs, we are dedicated to helping our clients and our people excel. For more information, please visit our web site at www.deloitte.com.au.

Liability limited by a scheme approved under Professional Standards Legislation.

Member of Deloitte Touche Tohmatsu Limited

© 2018 Deloitte Access Economics. All rights reserved.