



# Half Way There

## Introduction

500 Lives 500 Homes is a three year campaign to break the cycle of homelessness for 500 families, young people and adults in our community who are homeless or vulnerably housed. By getting to know each person by name and surveying their individual health, housing and support needs, we can respond in the best way to each person and get them housed fast. We match housing and services to help people thrive. We help pay for rent, bond or utilities. We support people to stay in housing. We aim to provide one co-ordinated access model and person centred case management with integrated healthcare while housed.

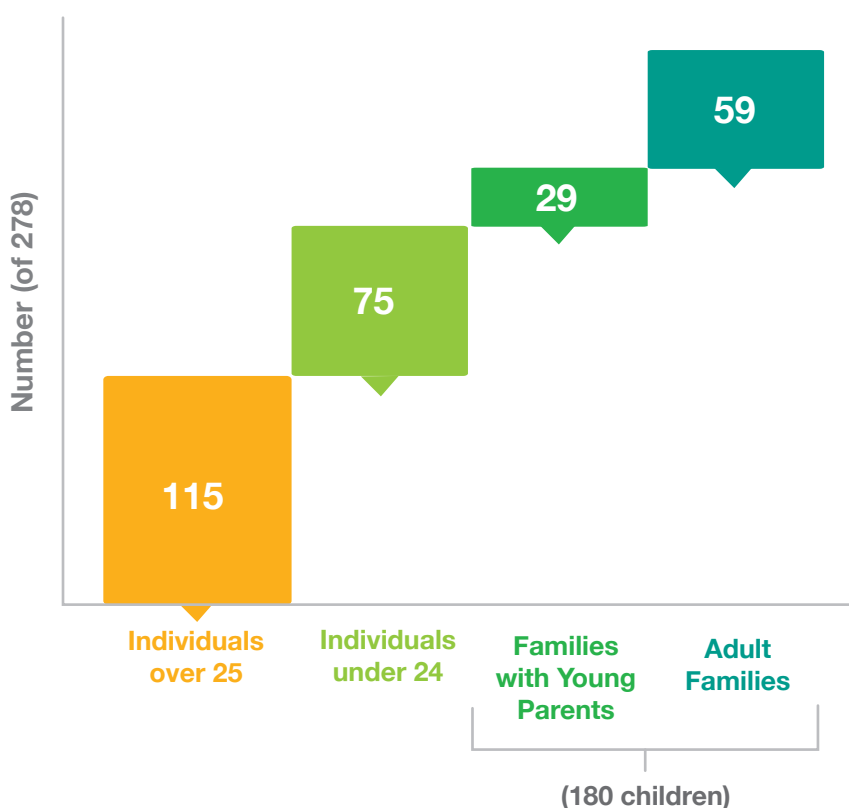
## Performance To Date

**278** homes found for individuals and families in 19 months.

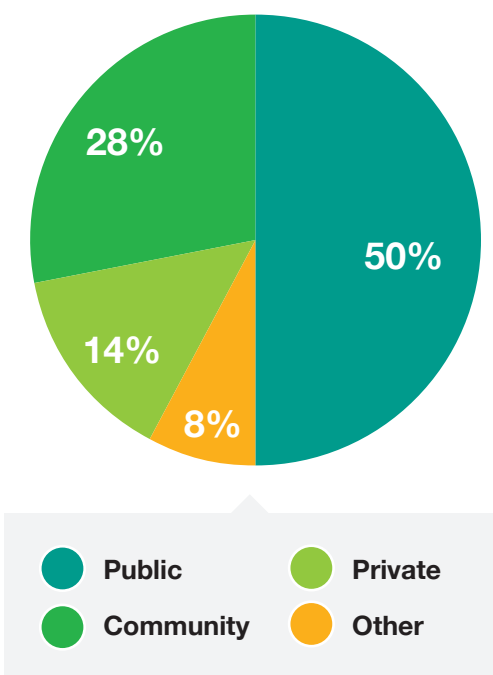
We're on target for 500 Homes.

- 34** partners
- 49** community organisations
- 19** months duration so far
- >90%** retention rate

## Who We Housed



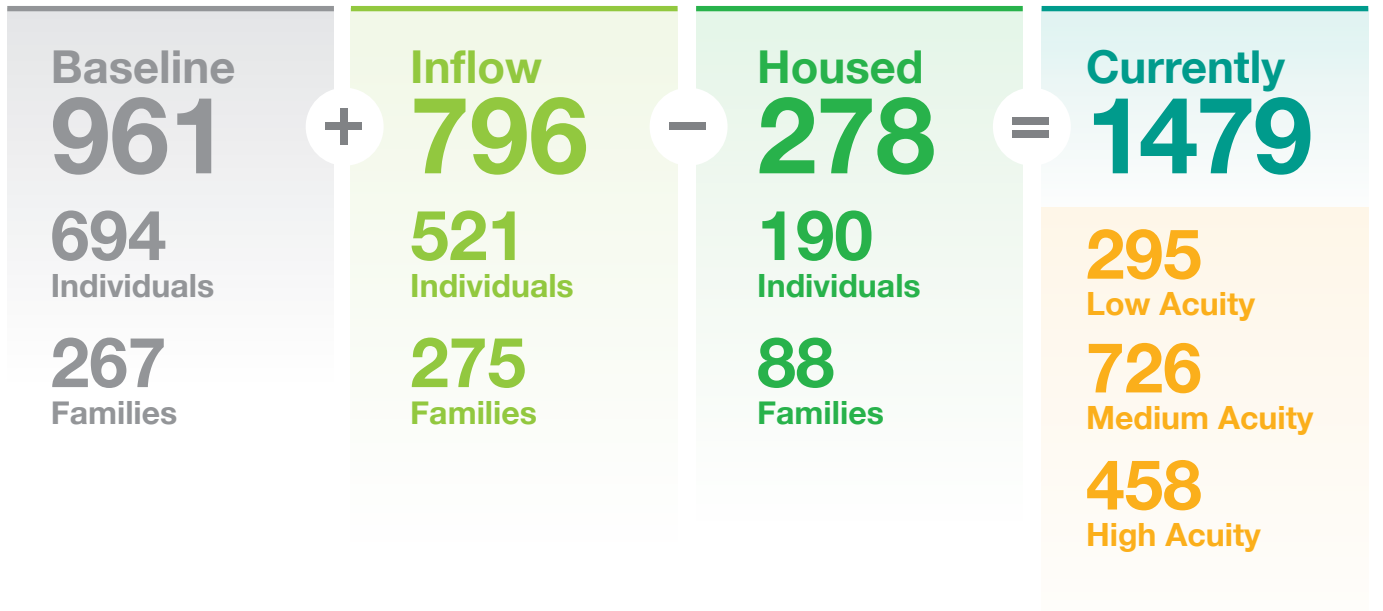
## What Housing



## We know the problem

### We know who the homeless are and what they need

Level of acuity of support needs is assessed for each individual and includes mental health, substance abuse and serious health challenges such as kidney, liver, hepatitis, heart and asthma.



There is general agreement that the current homelessness housing system needs change to improve social outcomes



There is a lack of supportive housing for people with high acuity needs who need ongoing site support to maintain their long term housing. However, people with low and medium acuity needs require much less ongoing support once housed.

## We have the solutions

---

The Housing First model works - housed people are not homeless

---

### 1. Find Housing

- Identify needs
- Line up supply
- Secure housing fast
- Limit days spent homeless



### 2. Pay for Housing

Help people pay for housing, bond, rent and utilities



### 3. Stay In Housing

- Support tenancy
- Resolve issues
- Connect to community
- Support to match individual needs
- Integrate healthcare



Evidence in US and Australia proves Housing First works

**50%** cheaper than keeping homeless

**80%+** tenancies are sustained

- Less use of emergency department, prisons and government funded services
- Appropriately matched support to needs means lower costs and better outcomes
- Many homeless need little support once housed permanently

### We have proven methodology

- Build local teams and share vision
- Clarify demand - by name, number, personal circumstance and level of need
- Match housing and services to help people thrive
  - Line up supply, move people into housing fast and sustain tenancy
  - Provide one co-ordinated triaged access model, person centred assessment, case management, integrated healthcare
  - Support can include linkages to service providers, social inclusion, parenting skills
- Keep people housed and integrate healthcare
  - Connect to appropriate mix of services to meet need
- Work collectively across sector to change system

# Strategies and Goals

**A. Make homelessness everyone’s responsibility – partner with us to complete the campaign**

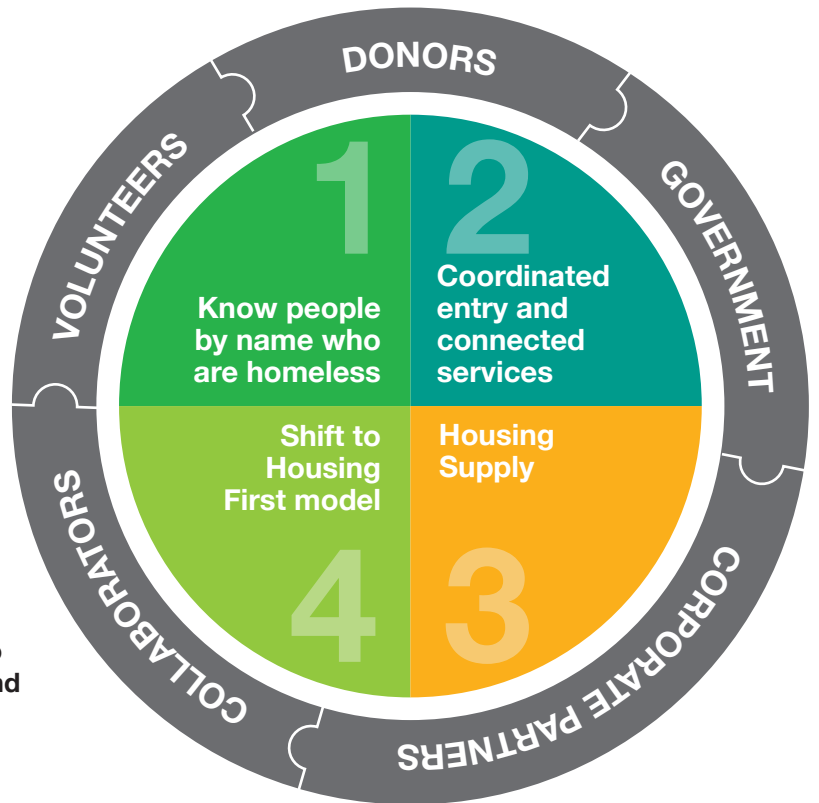
- Non-profits collaborating on services and housing
- Government as enabler
- Corporate partnerships and funding
- Funders for Collective Impact project and backbone

**B. Agree on Systems Change**

- Shift to a Housing First model
- Coordinated access
- Person centred approach
- Integrated healthcare

**C. Implement Community Action Plan for 500 Lives 500 Homes to reach 500**

**D. Appoint Supportive Housing taskforce to develop policy on Supportive Housing and strategies to increase supply across government departments**



**Housing and matched services are needed to help people thrive**



Ending homelessness in Brisbane one person, one family at a time

**500 Lives 500 Homes** - a coalition of NGOs partnering with the Queensland Government and Brisbane City Council